



PUBLIC DISCLOSURE STATEMENT

NORTHROP CONSULTING ENGINEERS

ORGANISATION (MEDIUM)


FY2020-21

Australian Government
Climate Active
Public Disclosure Statement



An Australian Government Initiative



NAME OF CERTIFIED ENTITY	Northrop Consulting Engineers
REPORTING PERIOD	1 July 2020 – 30 June 2021 [Arrears report]
DECLARATION	<p><i>To the best of my knowledge, the information provided in this public disclosure statement is true and correct and meets the requirements of the Climate Active Carbon Neutral Standard.</i></p>  <p>Jamie Shelton CEO 8/10/2021</p>



Australian Government
**Department of Industry, Science,
Energy and Resources**

Public Disclosure Statement documents are prepared by the submitting organisation. The material in the Public Disclosure Statement documents represents the views of the organisation and do not necessarily reflect the views of the Commonwealth. The Commonwealth does not guarantee the accuracy of the contents of the Public Disclosure Statement document and disclaims liability for any loss arising from the use of the document for any purpose.

Version September 2021. To be used for FY20/21 reporting onwards.



1. CERTIFICATION SUMMARY

TOTAL EMISSIONS OFFSET	1621 tCO ₂ -e
OFFSETS BOUGHT	6.8% ACCU 93.2% VERs
RENEWABLE ELECTRICITY	3%
TECHNICAL ASSESSMENT	Date: 08/10/2021 Name: Eleanor Tan Organisation: Northrop Consulting Engineers Pty Ltd Next technical assessment due: 08/10/2024
THIRD PARTY VALIDATION	Type 1 Date: 24/09/2021 Name: Ben Tardrew Organisation: Tardrew Partners Pty Ltd

Contents

1. Certification summary.....	3
2. Carbon neutral information.....	4
3. Emissions boundary.....	6
4. Emissions reductions.....	8
5. Emissions summary.....	9
6. Carbon offsets.....	10
7. Renewable Energy Certificate (REC) Summary.....	12
Appendix A: Additional Information.....	13
Appendix B: Electricity summary.....	16
Appendix C: Inside emissions boundary.....	18
Appendix D: Outside emissions boundary.....	18

2. CARBON NEUTRAL INFORMATION

Description of certification

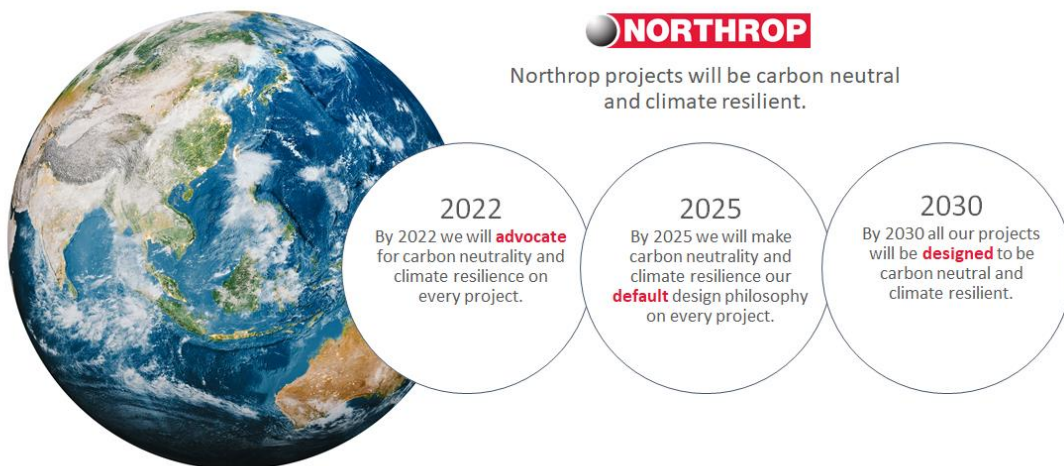
Organisation description

Northrop Consulting Engineers (trading as NC Pty Ltd, ABN 21 118 108 384) is a Climate Active certified carbon neutral medium Organisation for our corporate operations. Northrop is a multi-disciplinary engineering consultancy offering sustainability, structural, mechanical, civil, hydraulic, acoustic and ICT services.

As an organisation, we are committed and passionate about leading change to create a positive legacy in the built environment. As a signatory to Engineer's Declare A Climate and Biodiversity Emergency, we are committed to leading this change, starting with our own operations and people first.

Our commitment also includes the following:

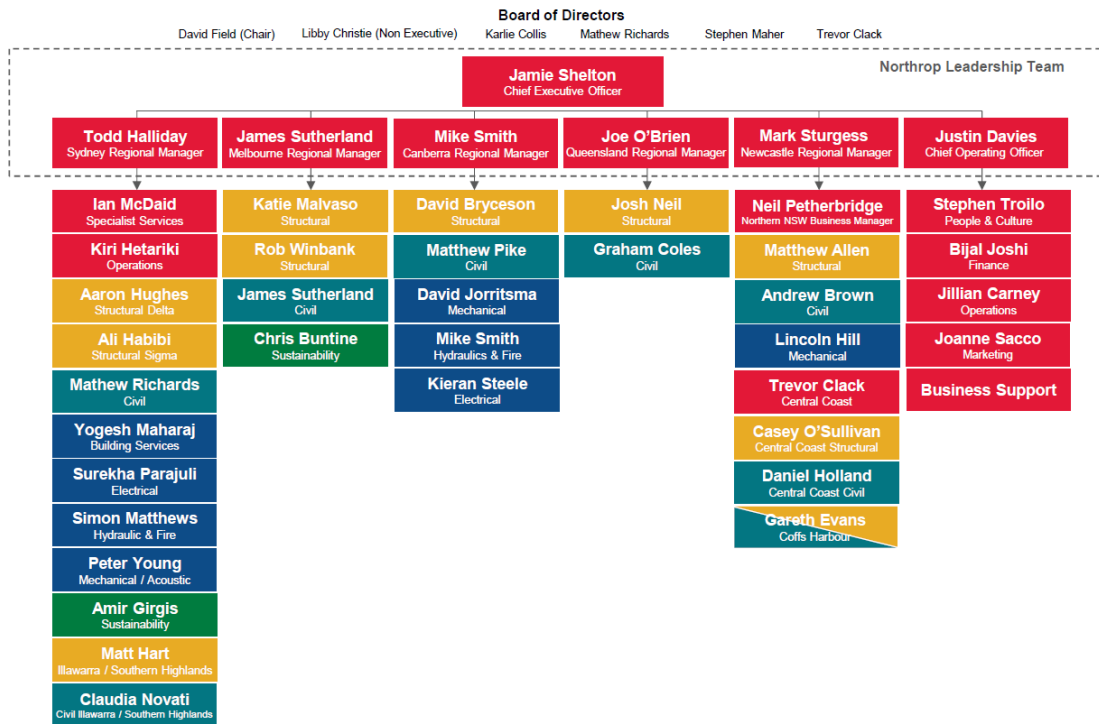
“Climate Active is important to Northrop as it aligns with our desire to lead the built environment to create positive change and be a part of creating sustainable, regenerative places for future generations.”



Established in 1976, Northrop is a locally-owned engineering consultancy with ten offices and 400+ people across NSW, ACT, QLD and VIC. Highly experienced in civil, structural, building services and sustainability, we also have expertise in emerging and niche engineering services.

Northrop works across a range of sectors including aged care, health, education, hospitality, land development, commercial, industrial and residential.

Structure



Trading names

- Northrop Consulting Engineers Pty Ltd

Parent company

- NC Pty Ltd

Child companies

- Northrop Consulting Engineers Pty Ltd
- Northrop Services Pty Ltd
- Northrop (Aust) Pty Ltd
- Northrop Charlestown Pty Ltd
- Northrop Engineers Pty Ltd
- BCA Solutions (Australia) Pty Ltd

Locations:

Northrop have offices in Melbourne, Brisbane, Canberra, Newcastle, Erina, Parramatta, Sydney, Wollongong, Coffs Harbour, Bowral.

3.EMISSIONS BOUNDARY

Inside the emissions boundary

All emission sources listed in the emissions boundary are part of the carbon neutral claim.

Quantified emissions have been assessed as relevant and are quantified in the carbon inventory. This may include emissions that are not identified as arising due to the operations of the certified entity, however are **optionally included**.

Non-quantified emissions are not applicable.

Outside the emissions boundary

Excluded emissions are not applicable.

Inside emissions boundary		Outside emission boundary
<p><u>Quantified</u></p> <ul style="list-style-type: none"> Electricity Gas Paper Water Business travel – Flight and Accommodation Venue Hire Freight Staff commute (Taxi and Uber) Staff commute to work Waste Petrol and gas used in company cars Stationary energy Refrigerants Cleaning Services Catering Office furniture 	<p><u>Non-quantified</u></p> <p>N/A</p>	<p><u>Excluded</u></p> <p>N/A</p>

Data management plan for non-quantified sources

There are no non-quantified sources in the emission boundary that require a data management plan.

4. EMISSIONS REDUCTIONS

Emissions reduction strategy

In July 2021, Northrop signed up for GreenPower certified carbon neutral electricity for the majority of our offices. This will have a large impact on our emissions going forwards.

For the 2021-22 financial year, we will focus on the following reduction opportunities:

- certified GreenPower to our remaining offices
- using Climate Active certified/eligible products and services for:
 - Flights
 - Accommodation
 - ICT
 - Office equipment
- Reducing or eliminating office-based paper use and using carbon neutral paper instead
- Sustainability selection criteria for events and future office lease requirements
- Staff engagement opportunities to reduce waste, energy and water in our offices and at home
- Exploring the sustainability partnerships such as City Switch that reduce operational emissions and advocate for sustainability.

As this is Northrop's first Climate Active certification, we are still identifying and quantifying emissions reduction opportunities. We will develop a five-year emissions reduction plan during the 2021-22 financial year that will include targets, objectives and actions for each financial year.

5. EMISSIONS SUMMARY

Organisation emissions summary

The electricity summary is available in the Appendix B. Electricity emissions were calculated using a market-based approach.

Emission category	Sum of Scope 1 (tCO ₂ -e)	Sum of Scope 2 (tCO ₂ -e)	Sum of Scope 3 (tCO ₂ -e)	Sum of total emissions (tCO ₂ -e)
Accommodation and facilities	0	0	58.4	58.4
Air transport (fuel)	0	0	0	0
Air transport (km)	0	0	51.4	51.4
Bespoke	0	0	0	0
Carbon neutral products and services	0	0	0	0
Cleaning and chemicals	0	0	12.1	12.1
Construction materials and services	0	0	0	0
Electricity	0	620.6	0	620.6
Food	0	0	44.7	44.7
Horticulture and agriculture	0	0	0	0
ICT services and equipment	0	0	0	0
Land and sea transport (fuel)	7.5	0	0.4	7.9
Land and sea transport (km)	0	0	487.6	487.6
Machinery and vehicles	0	0	0	0
Office equipment & supplies	0	0	98.8	98.8
Postage, courier and freight	0	0	21.5	21.5
Products	0	0	0	0
Professional services	0	0	0	0
Refrigerants	0	0	27.0	27.0
Roads and landscape	0	0	0	0
Stationary energy	0	0	0	0
Waste	0	0	116.1	116.1
Water	0	0	6.9	6.9
Working from home	0	0	4	4
Total	7.5	620.6	992.2	1620.4

6. CARBON OFFSETS

Offsets strategy

Offset purchasing strategy: In arrears

1.	Total offsets previously forward purchased and banked for this report	0	
2.	Total emissions liability to offset for this report	1621	
3.	Net offset balance for this reporting period	1801	
4.	Total offsets to be forward purchased to offset the next reporting period	180	Budget requirements limited offset purchasing to approximately 1800 tonnes for our initial certification.
5.	Total offsets required for this report	1621	

Co-benefits

The Mount Sandy Conservation project bring together indigenous and non-indigenous communities by promoting traditional land management for biodiversity conservation in a rare pocket of wetlands and woodlands between the Coorong National Park and Lake Albert. This piece of land forms a strategic wildlife corridor and is of great significance to the local Ngarrindjeri people.

The Song Chung Hydropower project harnesses the flowing energy of the Con River to generate 60,000MWh of renewable electricity to bridge the supply-demand gap and provide local employment and improved infrastructure to the region.

Offsets summary

Proof of cancellation of offset units

Offsets cancelled for Climate Active Carbon Neutral Certification										
Project description	Type of offset units	Registry	Date retired	Serial number (and hyperlink to registry transaction record)	Vintage	Eligible quantity (tCO ₂ -e)	Quantity used for previous reporting periods	Quantity banked for future reporting periods	Quantity used for this reporting period claim	Percentage of total (%)
Tiwi Islands Savannah Burning for Greenhouse Gas Abatement	KACCU	ANREU	24/05/2021	3,772,976,352 – 3,772,976,462 (ERF 105045) (Refer to screenshot in Appendix A)	2019	111	0	0	111	6.8%
Song Chung Hydropower	Gold Standard VER	Gold Standard Impact Registry	6/10/2021	16514178 – 16515867 (Refer to screenshot in Appendix A)	2013	1690	0	180	1510	93.2%
Total offsets retired this report and used in this report									1621	
Total offsets retired this report and banked for future reports								180		
Type of offset units				Quantity (used for this reporting period claim)			Percentage of total			
Australian Carbon Credit Units (ACCUs)				111			6.8%			
Verified Emissions Reductions (ERs)				1510			93.2%			

7. RENEWABLE ENERGY CERTIFICATE (REC) SUMMARY

Renewable Energy Certificate (REC) summary

The following RECs have been surrendered to reduce electricity emissions under the market-based reporting method.

1. Large-scale Generation certificates (LGCs)*	N/A
2. Other RECs	N/A

* LGCs in this table only include those surrendered voluntarily (including through PPA arrangements), and does not include those surrendered in relation to the LRET, GreenPower, and jurisdictional renewables.

APPENDIX A: ADDITIONAL INFORMATION

Additional offsets cancelled for purposes other than Climate Active Carbon Neutral Certification

Project description	Type of offset units	Registry	Date retired	Serial number (and hyperlink to registry transaction record)	Vintage	Eligible Quantity (tCO ₂ -e)	Purpose of cancellation
Mount Sandy Forest Conversation, South Australia (stapled to Song Chung Hydropower)	ABU	Victorian Biodiversity Register	07/10/2021	37821 - 39510	2019	0	Alignment with Northrop's biodiversity commitments

Evidence of Tiwi Islands purchase and retirement

Voluntary cancellation of units in ANREU

This letter is confirmation of the voluntary cancellation of units in the Australian National Registry of Emissions Units (ANREU) by ANREU account holder, Aboriginal Corporation Fund Limited (account number AU-2798).

The details of the cancellation are as follows:

Date of transaction	24 May 2021
Transaction ID	AU18511
Type of units	KACCU
Total Number of units	111
Serial number range (ERF Project ID)	3,772,976,352 - 3,772,976,462 (ERF105045)
Associated ERF Project Name(s)	Tiwi Islands Savanna Burning for Greenhouse Gas Abatement
Transaction comment	Voluntary retirement on behalf of Northrop Consulting Engineers to meet climate active certification FY20/21

Evidence Song Chung Hydropower purchase and retirement

Berne, 06 October 2021

Transaction notification CH-29986

Source account CH-100-830- 0
830 - Swiss Carbon Assets

Destination account CH-230-656- 2
Voluntary Cancellation Account CP2

Amount 1,690 (5-0-CER)

Transaction status 4-Completed

Transaction date 06.10.2021, 10:22:35

Transaction type 04-00-Voluntary cancellation

Notification No 1000000009123

Comment

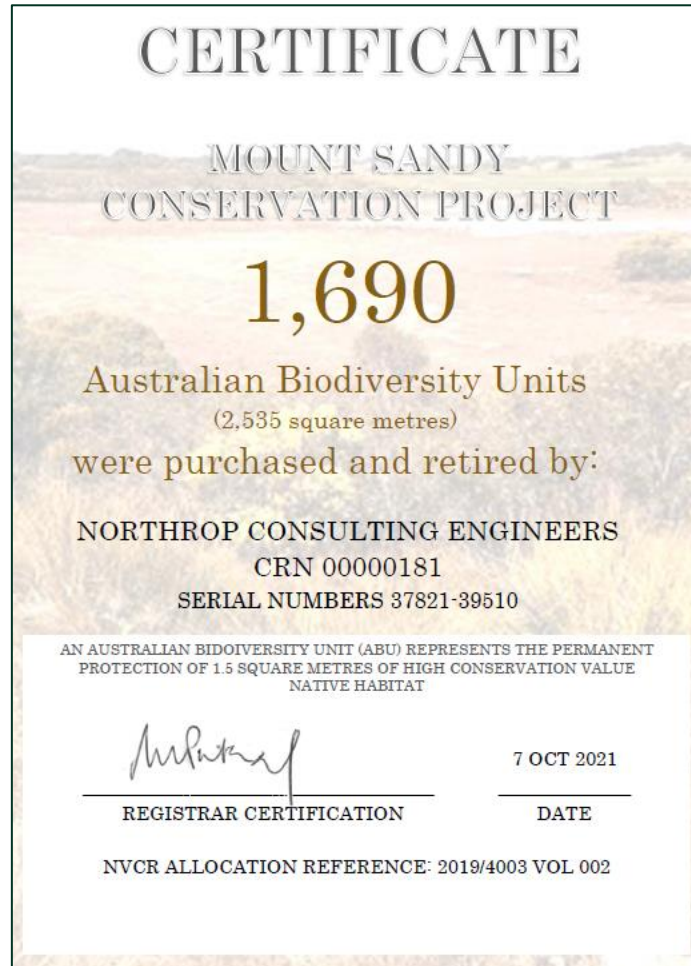
Transaction history

Transaction status	Transaction date
Proposed	06.10.2021, 10:22:33
Checked (No Discrepancy)	06.10.2021, 10:22:35
Completed	06.10.2021, 10:22:35

Transferred Units

Country	Unit Type	Start block	End block	Applicable CP	Installation	Year	LULUCF	Project No	Track	Expiry date	Amount
VN	5-0-CER	16514178	16515867	2				3532			1,690

Evidence of Mount Sandy purchase and retirement



APPENDIX B: ELECTRICITY SUMMARY

Electricity emissions are calculated using a market-based approach.

The market-based method provides a picture of a business's electricity emissions in the context of its renewable energy investments. It reflects the emissions intensity of different electricity products, markets and investments. It uses a residual mix factor (RMF) to allow for unique claims on the zero emissions attribute of renewables without double-counting.

Market-based approach summary

Market-based approach	Activity data (kWh)	Emissions (kgCO ₂ -e)	Renewable % of total
Behind the meter consumption of electricity generated	0	0	0%
Total non-grid electricity	0	0	0%
LGC purchased and retired (kWh) (including PPAs & Precinct LGCs)	0	0	0%
GreenPower	27,774	0	3%
Jurisdictional renewables (LGCs retired)	93,606	0	11%
Jurisdictional renewables (LRET) (applied to ACT grid electricity)	21,850	0	3%
Large Scale Renewable Energy Target (applied to grid electricity only)	141,486	0	16%
Residual electricity	578,354	620,621	0%
Total grid electricity	863,070	620,621	33%
Total electricity consumed (grid + non grid)	863,070	620,621	33%
Electricity renewables	284,716	0	
Residual electricity	578,354	620,621	
Exported on-site generated electricity	0	0	
Emission footprint (kgCO ₂ -e)		620,621	

Total renewables (grid and non-grid)	33%
Mandatory	30%
Voluntary	3%
Behind the meter	0%
Residual electricity emission footprint (tCO₂-e)	621

Figures may not sum due to rounding. Renewable percentage can be above 100%

Location-based approach summary

Location-based approach	Activity data (kWh)	Emissions (kgCO ₂ -e)
ACT	115,456	103,911
NSW	587,505	528,754
SA	0	0
Vic	103,900	113,251
Qld	56,209	52,274
NT	0	0
WA	0	0
Tas	0	0
Grid electricity (scope 2 and 3)	863,070	798,190
ACT	0	0
NSW	0	0
SA	0	0
Vic	0	0
Qld	0	0
NT	0	0
WA	0	0
Tas	0	0
Non-grid electricity (behind the meter)	0	0
Total electricity consumed	863,070	798,190
Emission footprint (tCO₂-e)	798	

Climate Active carbon neutral electricity summary

Carbon neutral electricity offset by Climate Active product	Activity data (kWh)	Emissions (kgCO ₂ -e)
N/A	0	0

Climate Active carbon neutral electricity is not considered renewable electricity. The emissions have been offset by another Climate Active carbon neutral product certification.

APPENDIX C: INSIDE EMISSIONS BOUNDARY

Non-quantified emission sources

The following sources emissions have been assessed as relevant, are captured within the emissions boundary, but are not measured (quantified) in the carbon inventory. These emissions are accounted for through an uplift factor. They have been non-quantified due to one of the following reasons:

1. **Immaterial** <1% for individual items and no more than 5% collectively
2. **Cost effective** Quantification is not cost effective relative to the size of the emission but uplift applied.
3. **Data unavailable** Data is unavailable but uplift applied. A data management plan must be put in place to provide data within 5 years.
4. **Maintenance** Initial emissions non-quantified but repairs and replacements quantified.

Relevant-non-quantified emission sources	(1) Immaterial	(2) Cost effective (but uplift applied)	(3) Data unavailable (but uplift applied & data plan in place)	(4) Maintenance
None				

APPENDIX D: OUTSIDE EMISSIONS BOUNDARY

Excluded emission sources

The below emission sources have been assessed as not relevant to an organisation's or precinct's operations and are outside of its emissions boundary. These emissions are not part of the carbon neutral claim. Emission sources considered for relevance must be included within the certification boundary if they meet two of the five relevance criteria. Those which only meet one condition of the relevance test can be excluded from the certification boundary.

Emissions tested for relevance are detailed below against each of the following criteria:

1. **Size** The emissions from a particular source are likely to be large relative to the organisation's electricity, stationary energy and fuel emissions
2. **Influence** The responsible entity has the potential to influence the reduction of emissions from a particular source.
3. **Risk** The emissions from a particular source contribute to the organisation's greenhouse gas risk exposure.
4. **Stakeholders** Key stakeholders deem the emissions from a particular source are relevant.
5. **Outsourcing** The emissions are from outsourced activities previously undertaken within the organisation's boundary, or from outsourced activities typically undertaken within the boundary for comparable organisations.

Emission sources tested for relevance	(1) Size	(2) Influence	(3) Risk	(4) Stakeholders	(5) Outsourcing	Included in boundary?
Purchased goods and services	Yes	Yes	Yes	Yes	No	Yes
Capital goods	Yes	Yes	Yes	Yes	No	Yes
Fuel and energy related activities	Yes	Yes	Yes	Yes	No	Yes
Upstream transportation and distribution	NA	NA	NA	NA	NA	NA
Waste generated in operations	Yes	Yes	Yes	Yes	No	Yes
Business travel	Yes	Yes	Yes	Yes	No	Yes
Employee commuting	Yes	Yes	Yes	Yes	No	Yes
Leased assets	Yes	Yes	Yes	Yes	No	Yes
Downstream transportation and distribution	NA	NA	NA	NA	NA	NA
Processing of sold products	NA	NA	NA	NA	NA	NA
Use of sold products	NA	NA	NA	NA	NA	NA
End-of-life treatment of sold products	NA	NA	NA	NA	NA	NA
Downstream leased assets	NA	NA	NA	NA	NA	NA
Franchises	NA	NA	NA	NA	NA	NA
Investments	NA	NA	NA	NA	NA	NA



An Australian Government Initiative

